



TUIO Set-Up Instructions

1. Launch the PulseIR utility program, “PluselRController.exe” in the PulseIR utility folder
2. Click on “Edit” button of Multi Display Support Setting below the device information window. (See Figure A)
3. Then the TUIO support window opens.
4. In the TUIO support window, please set parameters as follows :
 - Mouse emulation : “Off”
 - TUIO Support : “On”
5. And then click “Setting” at the bottom of the TUIO support window to finish the TUIO support.(See Figure A)

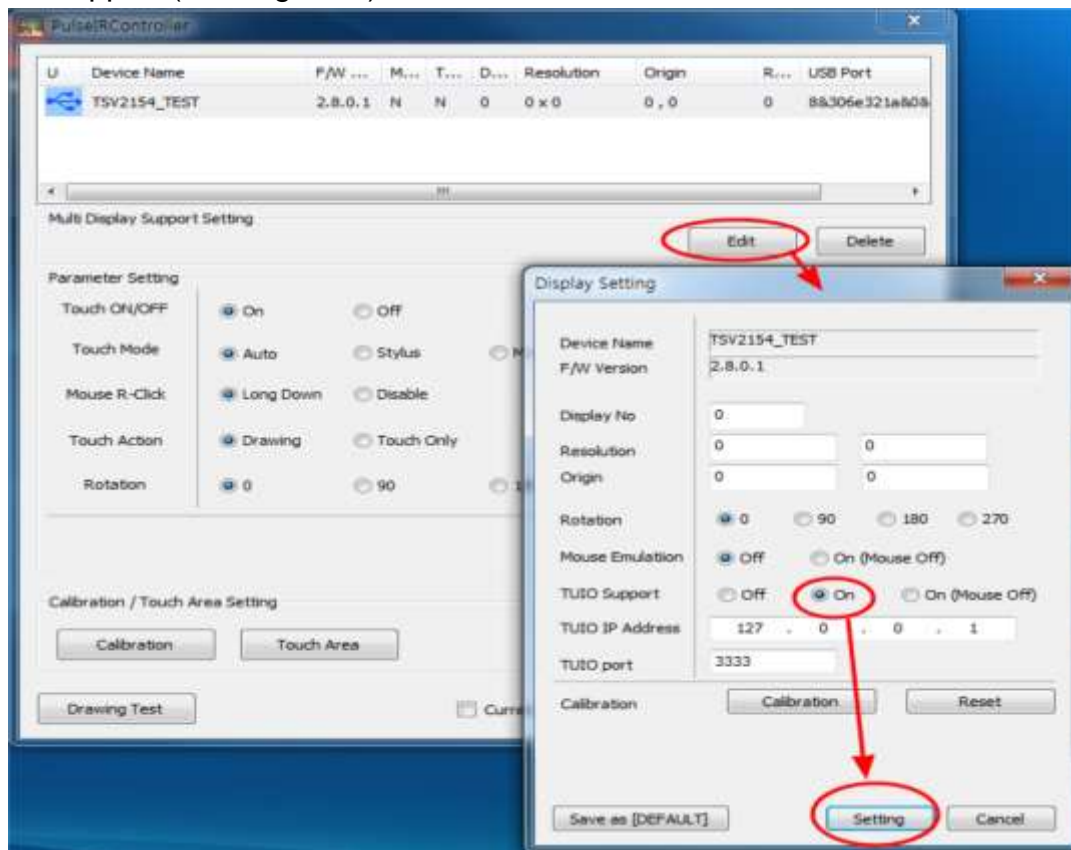


Figure A

6. In the PulseIR utility folder installed, please run “PulseIRService.exe” to run TUIO server.(See Figure B)

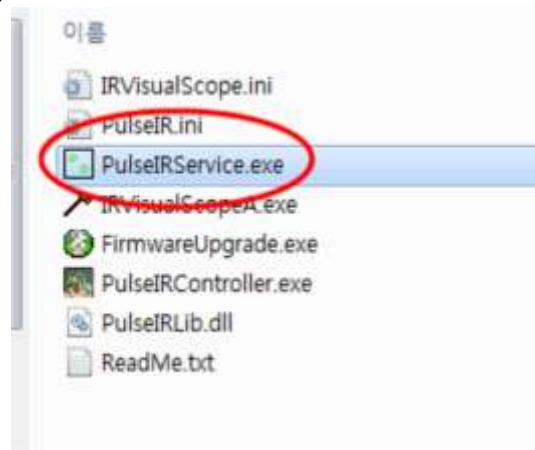


Figure B

7. Test it with TUIO client program to see if TUIO works.